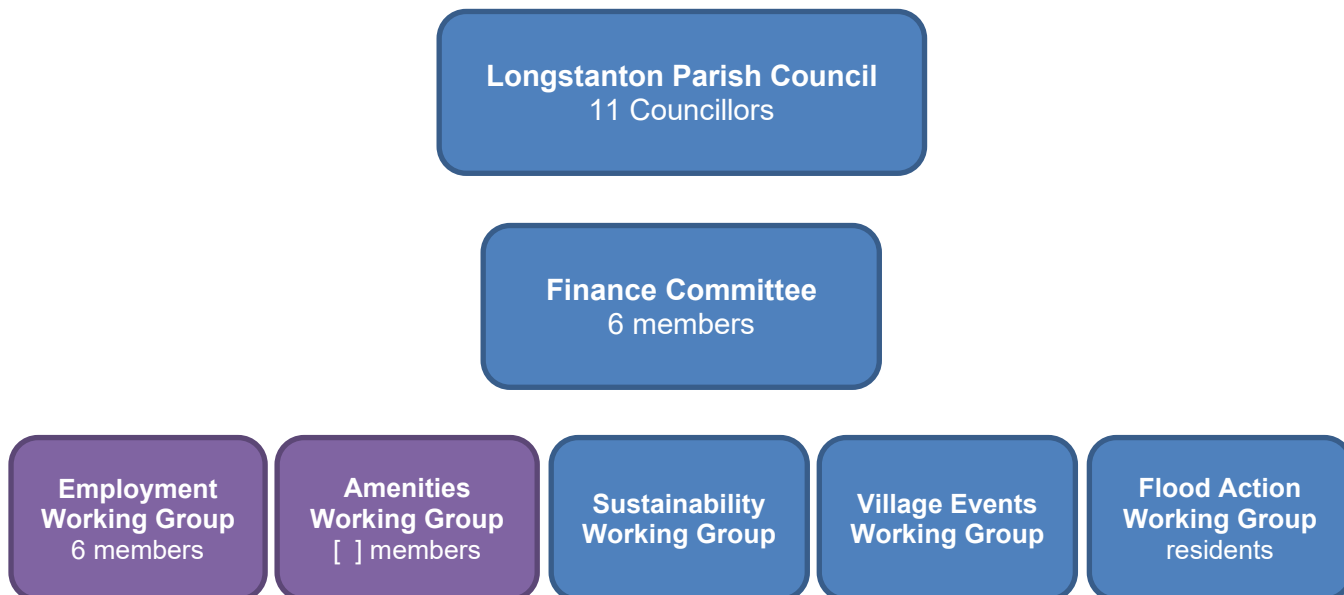


Parish Council Structure

Below shows the structure of Longstanton Parish Council. Blue boxes are existing, purple is either a change or new:



Charities

Longstanton Village Hall and Recreation Ground Charity
Allotments for Public Stone and Clay (Gravel Pit)

Longstanton Parish Council is sole trustee for the above 2 charities, therefore, all Councillors are, by default, members of these.

Recommendation

- There are currently 3 members of the employment committee, though it has been recommended by the Internal Audit to reclassify the Committee as a Working Group to facilitate support.
- Consider the implementation of an 'Amenities Working Group' to be responsible for the: playgrounds, cemetery, St Michael's Churchyard, public open spaces, etc.
- There have been 5 councillors and the clerk working on the Village Events Working Group. Open to new members.

There are also Cllrs who are first point of contact for various concerns. Suggest they are as follows:

Highways – Cllr delaMare-Lyon

Police – Cllr Mrs Brash-Hall

Those for the Sports Clubs need to be through the charity now that they are managing this facility.