

## **County Councillor report September 2020**

### **Safety concerns about Northstowe Guided Busway crossing opposite Reynold's Drove**

After some safety concerns were raised by residents, a site visit at the above crossing was held to discuss possible options. An inspection and options report from Waterman Aspen was commissioned in September with a 3 week turnaround from inspection to report and will look at possible adjustments that could be made. In addition SP landscapers who undertake grounds maintenance along the Busway have been instructed to remove the hedging and undergrowth which has self-set for a distance of 200 metres either side of the crossing on the Northstowe side of the track. This will maintain the maximum level of visibility for anyone crossing from the Northstowe side of the track. These works will commence on 11<sup>th</sup> October along the Busway track and will be completed on 17<sup>th</sup>/18<sup>th</sup>/19<sup>th</sup> November by gaining access to the Gallagher Northstowe land with their permission. As soon as the inspection and option report is received, further measures can then be considered.

### **NHS Test and Trace app.**

The new NHS Test and Trace has been launched and will be used to notify users if they come into contact with someone who later tests positive for coronavirus. It will allow people to report symptoms, order a coronavirus test, check in to venues by scanning a QR code and help the NHS trace individuals that may have coronavirus. A wide range of businesses, organisations and community venues are now required by national law to collect customer, visitor and staff contact detail logs, as well as displaying an official NHS QR code poster. Failure to collect these details or display the poster will result in fixed penalty fines. When someone enters a venue and scans a QR code poster, the venue information will be logged on the user's phone. The device will check if users have been at that location at the relevant time and if the app finds a match, users will get a message. The app will allow us to know more quickly if we're at risk of the virus, so we can take action, fast, to protect our communities and loved ones. The more people who use the app, the better it will work - and it will help us get ahead of the virus, preventing a second wave, further local lockdowns.

### **Library service back on the road.**

The mobile library service started again on the 21<sup>st</sup> September with two of the three vehicles being brand new. Due to Covid restrictions they will allow limited access initially and operate with an on-line select and collect service just like static libraries, so books are kept clean and returns can be quarantined. If casual users turn up the operator will assist as much as possible as we know not all can go on-line. Also, one of the redundant vehicles is planned for a refurb to deliver other outreach services to rural areas. This has great potential and is being used as a pilot project for Skills, Digital inclusion, Scams awareness, Public Health, community engagement, etc.

### **Cambridgeshire launch £500K top-up to broadband vouchers for rural residents**

Residents and businesses in rural areas of Cambridgeshire are being urged to apply for funding to benefit from the fastest and most reliable fibre connectivity - before the money runs out. Connecting Cambridgeshire has secured £500,000 extra "top-up" funding to help premises with the slowest broadband cover the cost of installing new gigabit-capable connections that will more than double their speeds. The Cambridgeshire top-up funding is part of Connecting Cambridgeshire's Keeping Everyone Connected work, using digital connectivity to help businesses and communities to recover from Covid-19, and will be used to rollout fibre broadband to the hardest-to-reach areas. Gigabit-capable means 1,000 megabits per second (1,000Mbps). Future-ready full fibre connections are faster, more reliable and cheaper to operate than traditional copper lines and provide a big leap forward in terms of speeds and reliability. Residents can choose to upgrade to 1,000Mbps or sign up to lower speed packages that match their requirements. Groups of rural premises with broadband speeds of less than 100Mbps, can apply to the national Gigabit

Broadband Voucher Scheme and pool vouchers worth up to £1,500 for homes and £3,500 for small to medium enterprises (SMEs) towards the cost of installing a new full fibre connection.

In addition, eligible rural properties getting less than 30Mbps will automatically receive a ‘top up’ to the voucher - offering an extra £1,500 per household or business towards the installation cost of gigabit-capable broadband. This means premises in group projects with the slowest speeds will get vouchers worth up to £3,000 per residential premise and up to £5,000 per business.

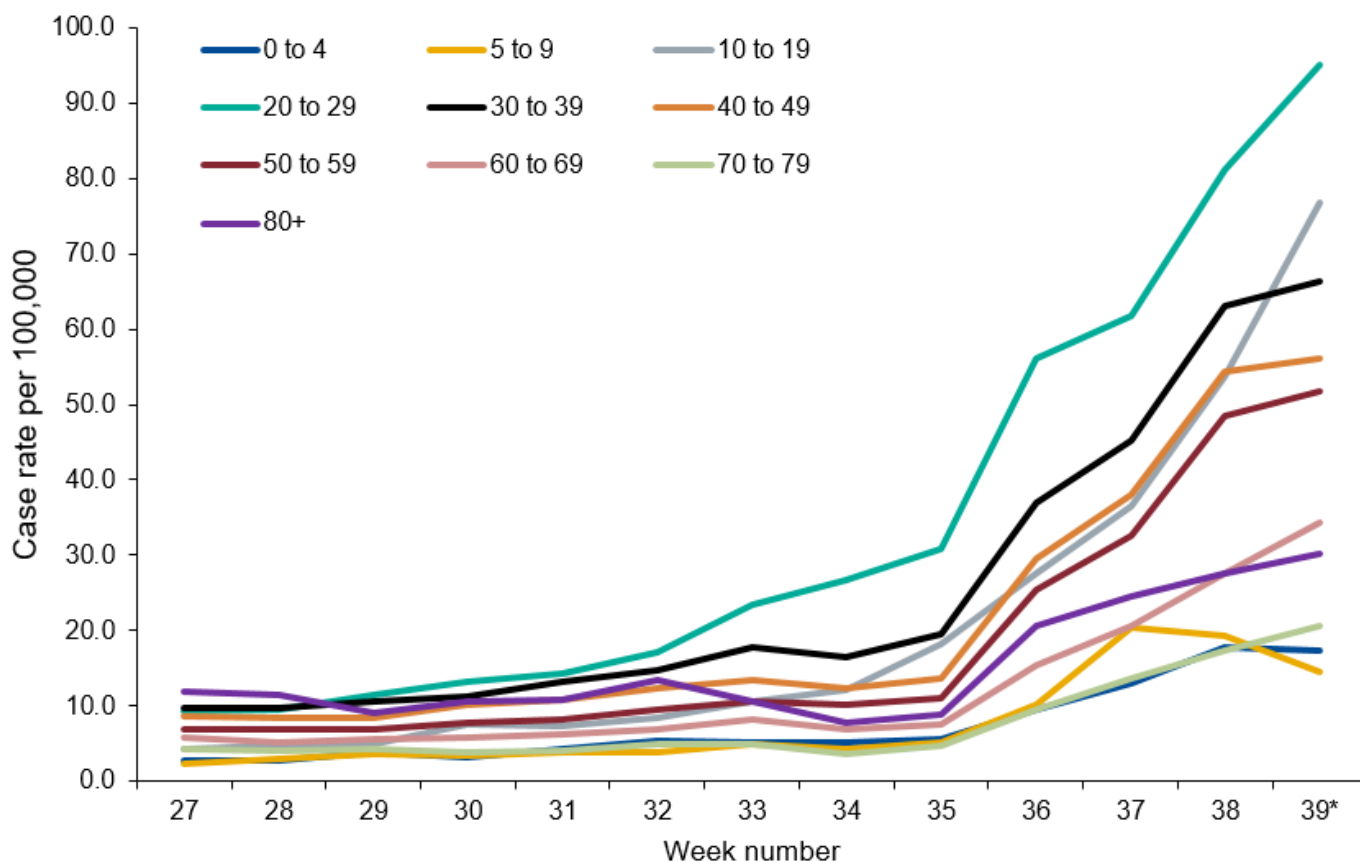
Group projects are when two or more residents or businesses get together to combine their vouchers towards the cost of connections. They will then be able to choose an internet package from a provider to suit their needs and budget.

The COVID-19 pandemic has shown how important it is for everyone to have access to reliable, fast broadband. Being digitally connected is vital for staying in touch with friends and loved ones and is key to being able to work from home, while also helping to stabilise local businesses. It’s encouraging to see Cambridgeshire putting extra cash behind the voucher scheme. The deadline to apply for the scheme is 31 March 2021 unless funding runs out before then as money will be allocated on a first-come, first-served basis.

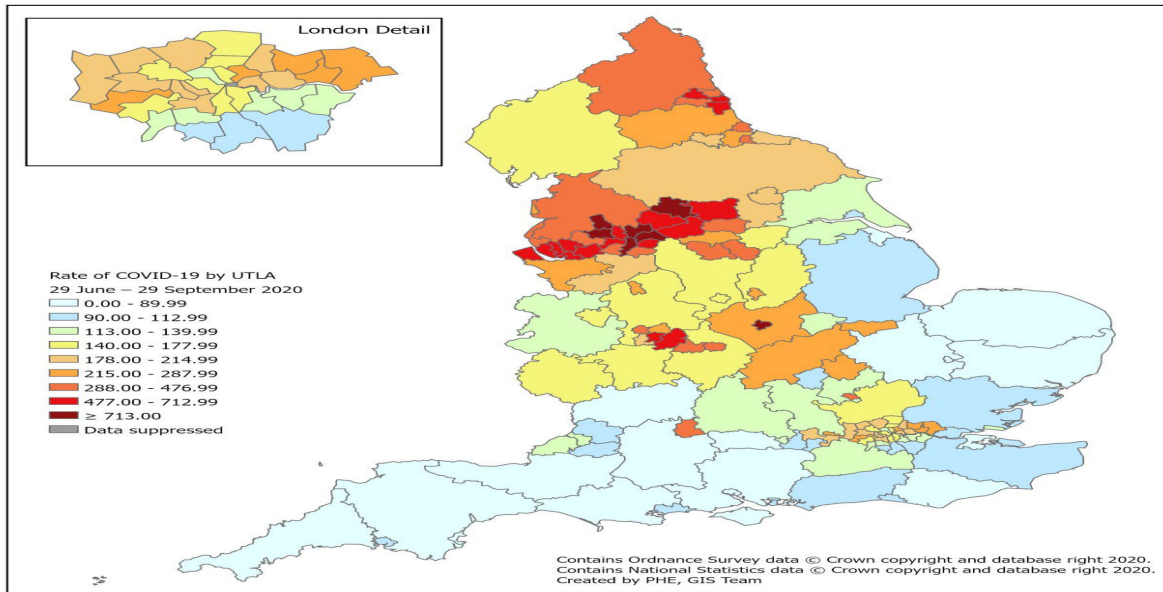
## Covid-19 update

### National picture

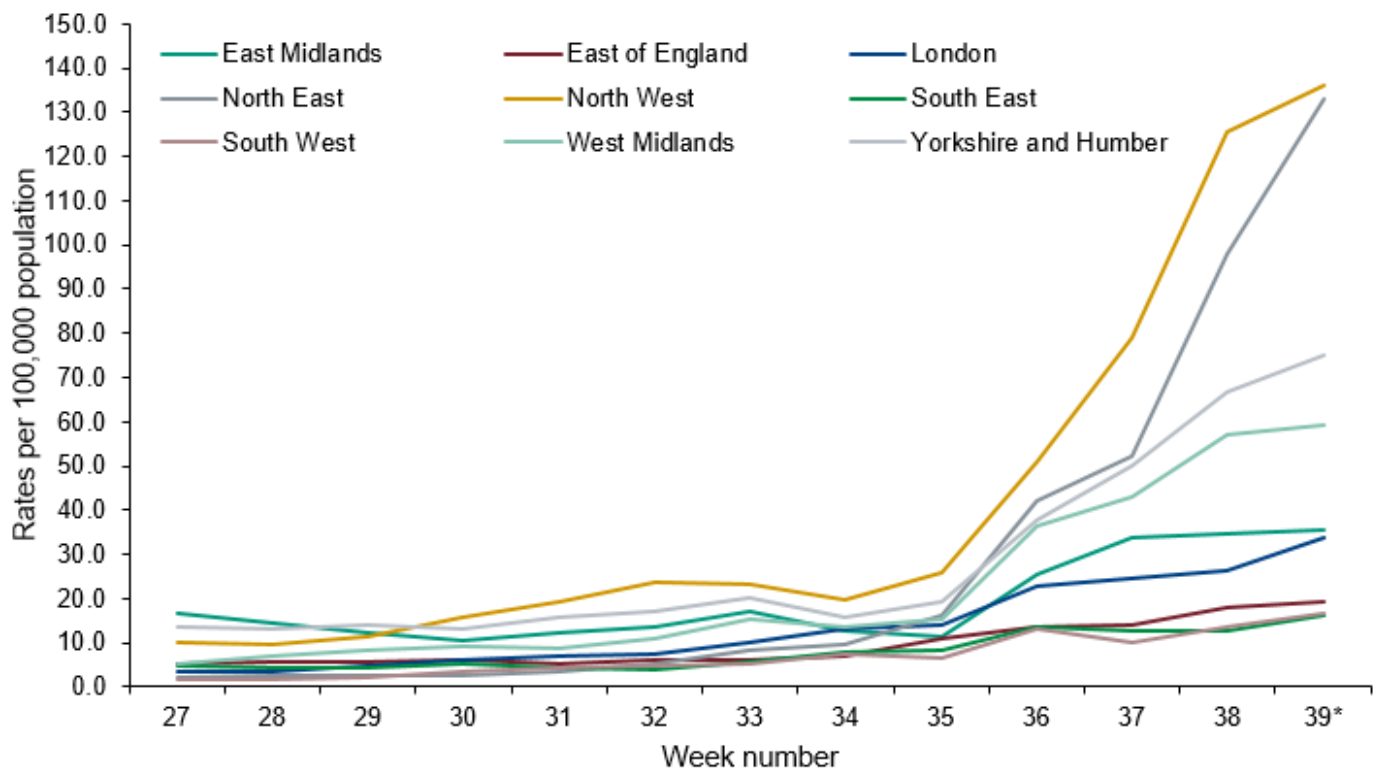
#### Weekly laboratory confirmed COVID-19 case rates per 100,000, tested by age group (England)



Cumulative rate (from week 27) of COVID-19 cases per 100,000 population tested under Pillar 1 and 2, by upper-tier local authority, England (box shows enlarged map of London area)



**Weekly laboratory confirmed COVID-19 case rates per 100,000 population tested under Pillar 1 and Pillar 2, by PHE Centres and sample week**



## Local update

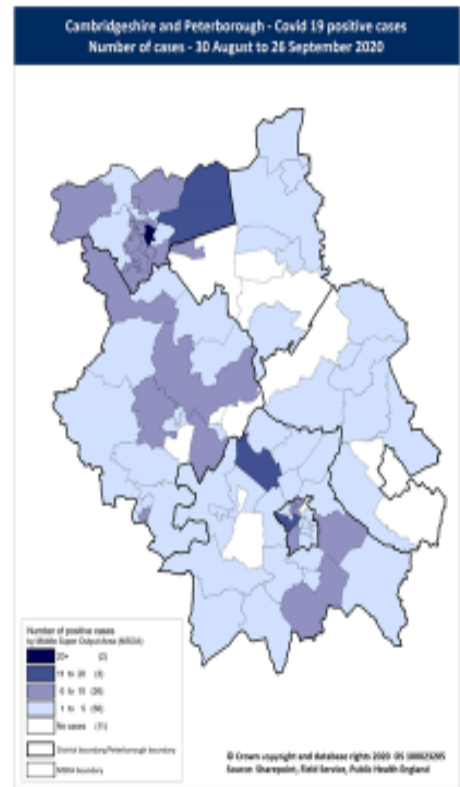
# Cambridgeshire and Peterborough map showing variation in numbers of Covid-19 cases (30 Aug – 26 Sep) by MSOA

Higher numbers of Covid-19 cases over the past 4 weeks are primarily observed in Central and Eastern Peterborough and parts of Huntingdonshire, Cambridge and South Cambridgeshire (30 August – 26 September – darker blue shading).

Fewer hotspots in Peterborough may be reflective of recent testing capacity impact

Map now includes care home cases.

**MSOA – Middle Super Output Area** – geographical areas with similar population size (around 7,000 people) to enable comparisons



## OFFICIAL

### Confirmed Covid-19 cases – overall and in care homes

- **148 new lab-confirmed Covid-19 cases** were detected in Cambridgeshire and Peterborough in the latest reporting period, as at 30 September. This is an increase of 46 compared to the previous week.
- The cumulative rate of Covid-19 cases per 100,000 population in **Peterborough (903.8) remains statistically significantly higher** than the national rate (689.9) (data at 30 September).
- The **weekly incidence per 100,000 population has increased** in all districts except Fenland in the last reporting week.

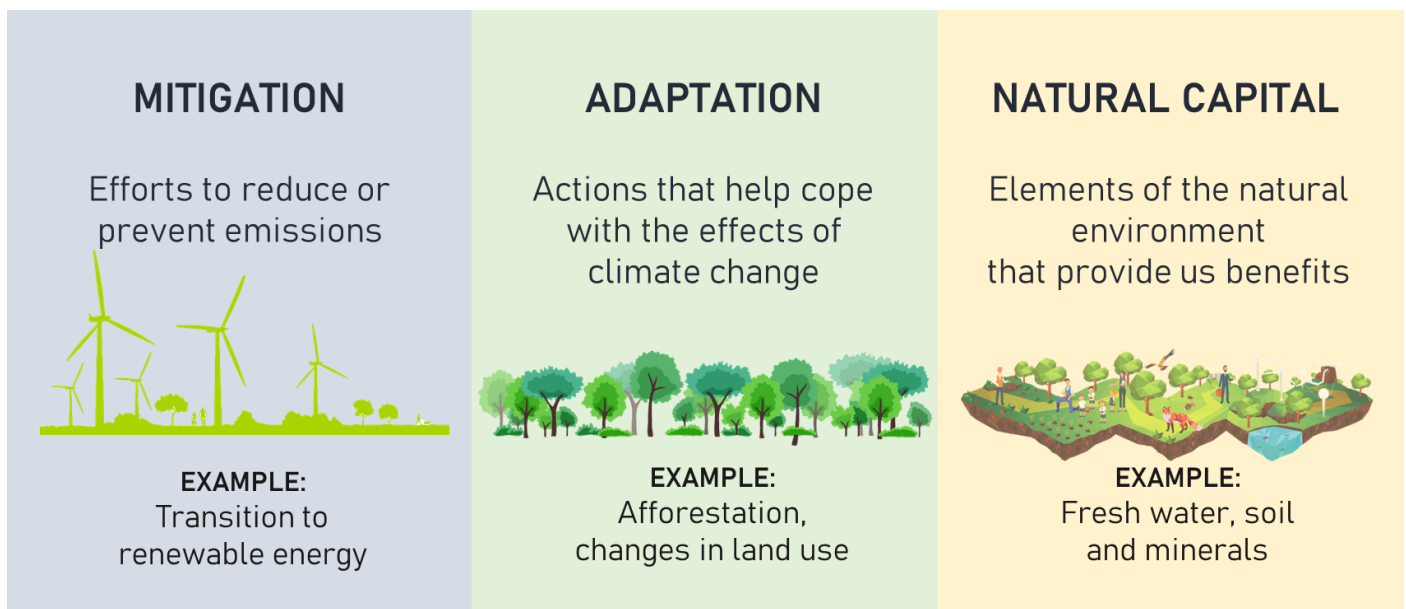
### All cause and Covid-19 deaths – all settings and in care homes

- **Three Covid-19 related death** occurred in Cambridgeshire and Peterborough in ONS reporting week 38 (2 deaths in Fenland and 1 death in Peterborough).
- There were **95 all-cause deaths in Cambridgeshire and Peterborough** (down from 107 in week 37).
- At a district level, **Fenland (+2)** and **Huntingdonshire (+4) had an increase in all-cause deaths** compared to the previous week. Figures in Cambridge and East Cambridgeshire remained the same (8 and 12 deaths respectively).
- The latest **notification of a Covid-19 related death** in a **Cambridgeshire care home** was **21 August**. The last notification at a **Peterborough care home** was **18 September** (1 Covid-19 related death) - prior to this the last Peterborough notification was 8 July (data received by 29 September).
- The number of **all-cause deaths** is **below the 2014-18 average** in **Cambridgeshire, Peterborough, and all districts** for week 38.
- The number of **all-cause deaths in care homes** is **below the 2014-18 average in Cambridgeshire and Peterborough**. Numbers are **above** the 5 year average in **East Cambridgeshire, Fenland,** and similar in South Cambridgeshire in week 38.

## County Council is highly commended for top climate emergency award

Cambridgeshire County Council's work to respond to the climate change emergency has been recognised after it was highly commended for a prestigious national award. The County Council's Climate Change and Environment strategy - underpinned by evidence from PhD students at Cambridge University - was highly commended at the *Leadership in responding to the Climate Emergency* category of the MJ Awards 2020. The County Council agreed in May 2019 to make a declaration of a Climate Emergency and through its collaboration policy research exchange programme with Cambridge University produced an evidence base of carbon emissions across the county. Two carbon footprints were developed, one for Cambridgeshire and Peterborough which included all greenhouse gas emissions that occur in the county (excluding peatland) broken down across key sectors such as transport, domestic buildings and commercial services; and the second for Cambridgeshire County Council alone.

The council used this evidence to develop its draft Climate Change and Environment Strategy - with cross party support, and a vision *'to deliver net zero carbon emissions for Cambridgeshire by 2050 in partnership with all stakeholders, whilst supporting our communities and Cambridgeshire's biodiversity and environmental assets to adapt and flourish as our climate changes'*.



This vision has already started to be translated into real action. The council has added a specific priority into its Business Plan which concentrates on helping Cambridgeshire reach this net zero carbon target by 2050 and set up a £16million Environment Fund to take all the Council's offices it owns and occupies off fossil fuels by 2025 and cut its organisational carbon footprint by 50% by 2023. The Council procures £450million of services every year for Cambridgeshire communities and it will be working with its supply chain to reduce carbon emissions.

The County Council has been leading the way in prioritising climate and environment issues for some time. Through its initial energy investments the Council has set up a self-financing unit to focus on energy project delivery. Initially this covered schools and a solar farm, but has now been extended to cover battery storage and smart-grid development. Since then the authority has invested £11m in schools to improve energy efficiency, resulting in energy bill savings of £910,000 a year.

In 2018 the Council won the British Renewable Energy Awards' pioneer category and in 2019 became a signatory to UK 100, to lead solutions for rural communities and commit to securing the shift to 100% clean energy by 2050. As a result, the County Council was asked to set up and lead a Countryside Climate

Network of rural authorities to work to share best practice across the country, and develop nature based policy solutions to climate change. This excellent strategy is already a key part of our contribution to the Countryside Climate Network and is sure to be used by other authorities as they work together to tackle climate change and secure a cleaner future. Being recognised as highly commended for this award proves that Cambridgeshire's work is recognised on the national stage. The County Council also launched a Plastics Reduction Strategy - to eliminate single use plastics to protect the biodiversity of our oceans and marine life - and was also named 'East of England Council of the Year' at the 2019 Energy Efficiency Awards.

The reduction of its carbon footprint is one of the Council's foremost priorities. The targets set are ambitious, but the County Council can, and must deliver, having already invested £22m into carbon reduction schemes to benefit local people, identified £56m to work in partnership on more, and planted 25,000 trees.

**Peter Hudson**  
**County Councillor**  
**Longstanton, Northstowe, Oakington, Westwick, and Over**