

A14 Cambridge to Huntingdon Improvement Scheme November to December 2019

Section 1 and 2 – Alconbury & Ellington to East Coast Main Line
Section 3 - East Coast Main Line to Swavesey
Sections 4 and 5 - Swavesey to Milton
Section 6 – Huntingdon

Traffic Management:

Sections 1,2 &3: On Friday 6 December, the following sections will be closed for one night (between 9 pm and 5 am):

A1 northbound between Buckden and Alconbury
A1 southbound between Alconbury and Buckden
A14 eastbound between Ellington junction 20 and Brampton Hut junction 21
A14 westbound between Brampton Hut junction 21 and Ellington junction 20

On Saturday 7 for one night (9pm – 8am) the westbound A14 will be closed between Godmanchester, junction 24 and Spittals, junction 23

The A1 southbound will be closed between Alconbury and Buckden on Sunday 8 for one night (9 pm to 5 am), as will the A14 eastbound between Ellington, junction 20 and Brampton Hut junction 21

Sections 4: On Friday 6 December, the following sections will be closed for one night (between 9 pm and 5 am):

A14 eastbound between Fenstanton junction 27 and Swavesey junction 28

Between 9 pm on Friday 6 and 5 am on Monday 9 December the A14 westbound between Swavesey, junction 28 and Fenstanton, junction 27 will be closed.

Between 6am on Saturday 7 and 5am to Monday 9 December the A14 eastbound will be closed at Swavesey, junction 28 between the exit and entry slips.

The new eastbound entry slip opened at Swavesey on 3 December. The new eastbound exit slip will be opened at the same time as the new Huntingdon bypass on 9 December.

The new westbound link that will replace the Girton loop will now open on the morning of Tuesday 17 December.

There will be a full weekend closure at Bar Hill on the weekend of 13-14 December for the lifting of the deck of the new pedestrian and cycle bridge.

Section 5: Work on the eastern section of the Milton roundabout at junction 33 is scheduled for weekend of 13 -14 December.

There will be a number of night closures on the main A14 carriageway and some slip roads during December for surfacing works.

(Check www.trafficengland.com for the most up-to-date information)

You can contact us on our dedicated A14 Public Helpline 0800 270 0114
Scheme information is also available at our website
www.highwaysengland.co.uk/A14C2H and you can also follow us at:



A14 Cambridge to Huntingdon Improvement Scheme November to December 2019

Construction Activities:

Sections 1 & 2: In preparation for the imminent opening of the new by pass on 9 December, the length of the new A14 from Ellington to Swavesey has been subject to a rigorous regime of inspections, commissioning and testing, including dual carriageway and junction safety audits.

Construction activities have focused on finishing off works and the planting of thousands of trees (as can be seen in the foreground of the picture below), shrubs and hedgerow plants. Away from the main road, ground conditions allowing, work has continued on tracks, paths and fencing. A close-boarded fence has been installed between the northbound A1 and the path that runs along the west side from Alconbury to Brampton Hut.

The by-pass opening on December 9 will remove A14 traffic from the Brampton Hut junction, enabling the commencement of re-modelling work on the roundabout and traffic lights. This will allow completion of the pedestrian, cycle and equestrian path from Brampton to Alconbury, including traffic light-controlled crossings at Brampton Hut.



You can contact us on our dedicated A14 Public Helpline 0800 270 0114
Scheme information is also available at our website
www.highwaysengland.co.uk/A14C2H and you can also follow us at:



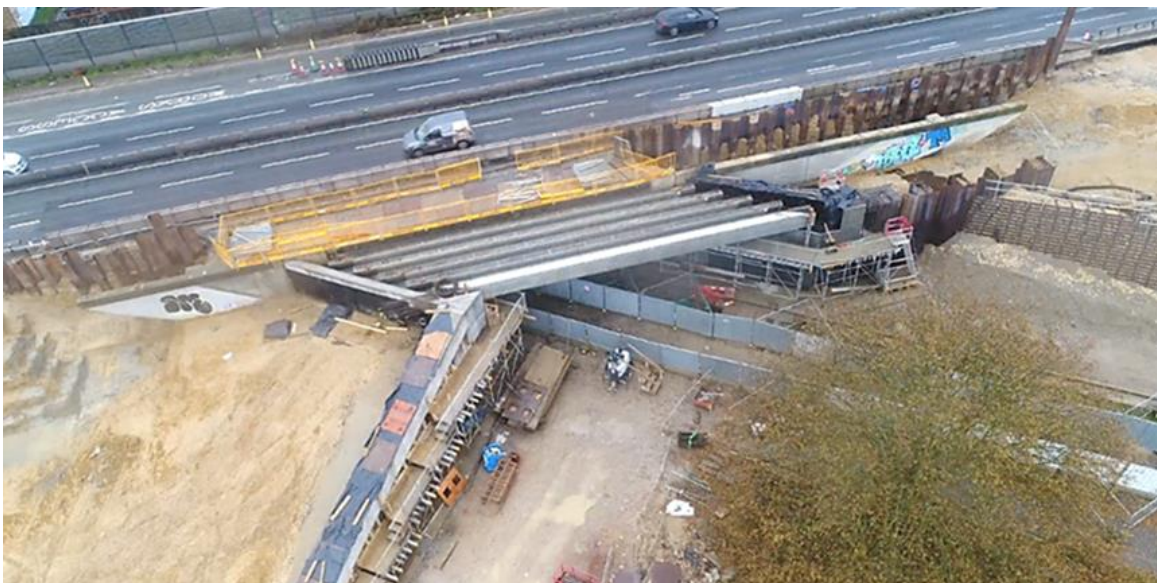
A14 Cambridge to Huntingdon Improvement Scheme November to December 2019

Sections 4: Construction work on the new westbound exit slip at Bar hill has started now that the pylons for the new suspension bridge (pictured below) have been installed. The deck for this new pedestrian and cycle bridge will be lifted into place during the weekend of 13 December. Once completed, the back spans will be attached in preparation for cabling to begin.

Construction of the new local access road from Swavesey past Lolworth and on towards Bar Hill continues.



Section 5: The extensions to the bridges at Kings Hedges and Impington, pictured below, continue, with the installation of the beams to support the new carriageway and then laying the basecourse, water proofing across each bridge.



You can contact us on our dedicated A14 Public Helpline 0800 270 0114
Scheme information is also available at our website
www.highwaysengland.co.uk/A14C2H and you can also follow us at:



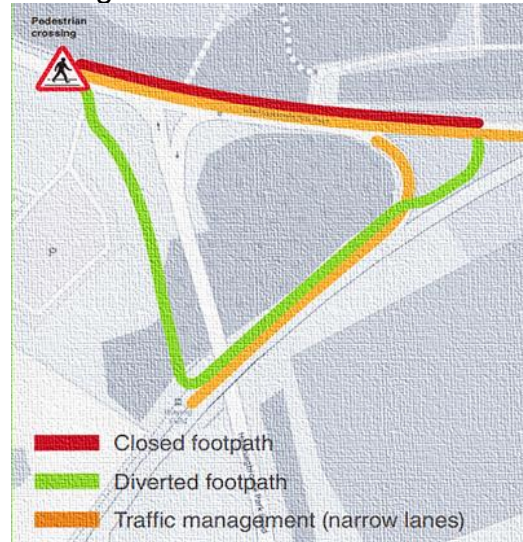
A14 Cambridge to Huntingdon Improvement Scheme November to December 2019

An environmental barrier and vehicle restraint barriers (VRS) are being installed at Junction 32, Histon and work to complete the new pond is progressing well.

Section 6: Utilities diversions, drainage works and vegetation clearance continue on Hinchingsbrooke Park road and footpath closures and diversions remain as shown right.

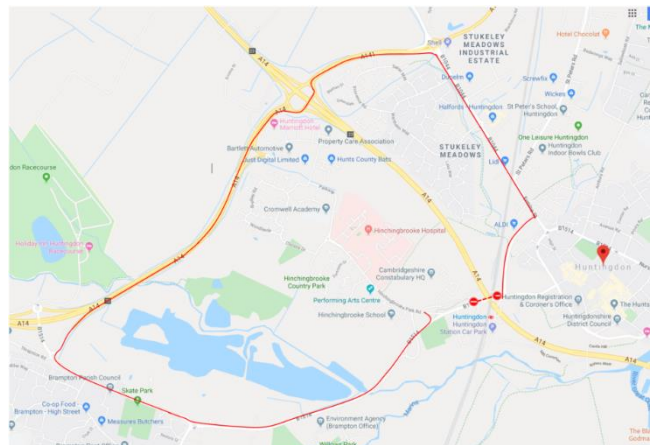
****New Date****

During November, we installed safety goalposts on Brampton road B1514 to reduce the risk of any vehicle striking the viaduct, in preparation for work to start on 2 December. Goal posts will remain in place for approx.18 months while we remove the viaduct. During this phase, we will close the Southern Footpath on Brampton road outside the Train Station steps.



This will be a short section of the footpath between the footpath crossing at Station Access Road to the steps into the station (See attached drawing and below orange box), there is still a suitable route for all users of this footpath once closed.

From 01:00am on the 25th December until the 03:30am on the 27th December, we will be closing Brampton road (B1514) from Edison bell way to Burrows Drive. This will allow us to implement safety decks under the viaduct in preparation for our work in February 2020.



A diversion route on the right will be in force during this time:

The mobile visitor centre will be present in Huntingdon before we carry out our work to answer any questions. Location TBC.

You can contact us on our dedicated A14 Public Helpline 0800 270 0114
Scheme information is also available at our website
www.highwaysengland.co.uk/A14C2H and you can also follow us at:



A14 Cambridge to Huntingdon Improvement Scheme November to December 2019

Other News: The astounding scope of the archaeological finds on the A14 has been reported both nationally and internationally, attracted great local interest, as shown by the popularity of our A14 archaeology open days. Mola Headland's excavations have recovered thousands of objects which can help us to investigate the lives and identities of people who lived in Cambridgeshire over thousands of years.

We're excited to announce that our archaeology lead, Dr Steve Sherlock has been nominated for the title of 'Archaeologist of the Year' in the annual Current Archaeology Awards. The awards celebrate those judged to have made outstanding contributions to archaeology in 2019 and are voted for by the public. You may have seen him on T.V. describing some of the more unexpected finds which included the evidence of the first beer brewed in Britain and the skulls of prehistoric woolly rhinos.



If you'd like to find out more and vote for Steve, here's the link:

[Vote for Dr Sherlock](#)

You can contact us on our dedicated A14 Public Helpline 0800 270 0114
Scheme information is also available at our website
www.highwaysengland.co.uk/A14C2H and you can also follow us at:

